



PRODUCT CATALOG



Spas and Resorts,
Hotels,
Govt Ayurved Hospitals,
Ayurved Colleges,
Patanjali Ayurved
Art of Living
Baidyanath
Organics India
Spa Dunia (Dubai)
Lotus Spa (Dubai)
Mizan Naturopathy
Sanjivani (Ukraine)
and lot more...

Our Clients List
includes leading

Sanjivani

SANJIVANI MEDICO EQUIPMENTS

SANJIVANI HOUSE, C-515, SANJIVANI HOUSE, SARASWATI VIHAR, NEW DELHI - 39
email: sanjivanimt@yahoo.com
www.sanjivanibiz.com
www.panchkarmabiz.com



SNEHAN KARMA PRODUCTS



CODE No: SAN-001

MASSAGE TABLE (TYPE 1)

Sanjivani's massage tables are made from hard wood or teak wood. The table has a slightly slanted & curved wooden top for full body oil massage and Shirodhara. Its head end has a specially-designed wooden pot for collecting oil. Can be used for massage or abhyanga.

SPECIFICATION

Dharapathy: Sleek and sturdily built. Wooden board with rim all around.

Stand: Of sturdy build to carry the weight of table and the patient's.

Finish: Available in natural wood polish and walnut.

CODE SAN-004



CODE No: SAN-002

MASSAGE CUM SHIRODHARA TABLE (TYPE 2)

Sanjivani's massage-cum-shirodhara tables are made from hard wood or teak wood.

The table has a slightly slanted & curved wooden top for full body oil massage and Shirodhara. Its head end has a specially-designed wooden pot for collecting oil. It can also be used for massage or abhyanga.

SPECIFICATION

Dharapathy: Sleek and sturdily built. Wooden board with rim all around.

Stand: Of sturdy build to carry the weight of Dharapathy and the patient's.

Finish: Available in natural wood polish.

CODE SAN-004



CODE No: SAN-003

DRONI (MODEL 1)

Sanjivani's massage tables are made from hard wood or teak wood. The table has a slightly slanted & curved wooden top for full body oil message and Shirodhara. Its head end has a specially-designed wooden pot for collecting oil. Can be used for massage or abhyanga.

SPECIFICATION

Dharapathy: Sleek and sturdily built. Wooden board with rim all around.

Stand: Of sturdy build to carry the weight of Dharapathy and the patient's.

Finish: Available in natural wood polish.

CODE SAN-004



SNEHAN KARMA PRODUCTS



DRONI 1

DRONI (MODEL 1)

DESCRIPTION:

Sanjivani's Shirodhara/Abhyanga/Massage tables are made from hardwood or teak. The table has a slightly slanted & curved wooden top for full body oil massage and Shirodhara. Can be used for Abhyanga, Shirodhara or Nasyam etc. Additional a wooden slab is given for storage and keeping items.



DRONI 2

MODEL 1 FEATURES:

Sleek and sturdily built. Wooden board with rim all around.

Stand: Carved wooden legs. Of sturdy build to carry the weight of Dharapathy and the patient.

Finish: Available in natural wood polish.

MODEL 2 FEATURES:

Sleek and sturdily built. Wooden board with rim all around.

Stand: Carved wooden legs. Of sturdy build to carry the weight of Dharapathy and the patient's.

Finish: Available in natural walnut finish.

CODE SAN-004



DRONI 3

DRONI (MODEL 3)

DESCRIPTION:

This is a specially hand carved traditional droni, which is made by traditional tribal wood artisans. This Droni is a complete hand made, carved out of medicinal single piece of wooden log. Top is detachable. Comes in dark, raw and natural polish finish.

FEATURES:

Sleek and sturdily built. Wooden board with rim all around.

Stand: Carved wooden legs. Of sturdy build to carry the weight of Dharapathy and the patient. Finish: Available in natural wood polish.

CODE SAN-005



Dhroni Model 4

MESSAGE TABLE (TYPE 4)

DESCRIPTION:

This is a specially hand carved traditional droni, which is made by traditional tribal wood artisans. This Droni is a complete hand made, carved out of medicinal single piece of wooden log. Top is detachable. Comes in dark, raw and natural polish finish.

FEATURES:

Sleek and sturdily built. Wooden board with rim all around.

Stand: Carved wooden legs. Of sturdy build to carry the weight of Dharapathy and the patient. Finish: Available in natural wood polish.

CODE SAN-006



SNEHAN KARMA PRODUCTS



ROYAL PANCHKARMA WORKSTATION

DESCRIPTION:

Sturdily built, sleek & elegant Royal Workstation is constructed of joined wooden board with hardwood borders. The table has a slant towards Head-end and Foot-end for collection of oil. Table can be used for Abhyanga, Shirodhara, Nasya, and Vashpa & Nadi Swedan etc.

SPECIFICATIONS:

Table size: 200cm x 80cm x 80cm high.

Construction: Bed made of jointed wooden board with hand carved side borders & Legs.

Shirodhara Stand: Carved solid Wood stand with storage box is mounted on wheels & comes with a Copper pot, brass chains & hooks to hang. Pot with hammer marks has a bright natural finish.

Swedan Yantra: Heavy Aluminum body is fitted with electric heater, pressure gauge, safety pressure valve & steam flow control valves. Mounted on wheels.

Nadi Swedan: Steam flows from a hand-held nozzle to give proper steam-bath at a point.

Frame: Teak-wood constructed Dome in Two parts for steam-bath. Overall Size: Approx.150cm x 70cm x 45cm.

Accessories: One: Copper Pot, Four: White off white cotton sheet covers for Steam Dome, Foot stool & Wooden partition for Steamer.

Finish: Natural wood polish finish.

Power: 220V AC. 3kw.

CODE SAN-006

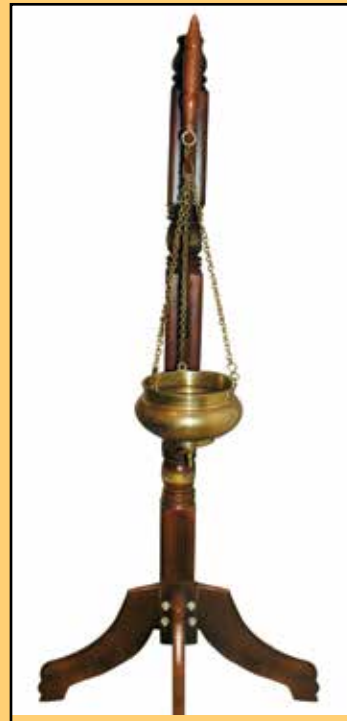
VARIOUS MODELS OF SHIRODHARAS



TYPE 1 CODE No: SAN-007



TYPE 2 CODE No: SAN-008



TYPE 3 CODE No: SAN-008



TYPE 4 CODE No: SAN-009

Sanjivani's Shirodhara Stands come in four different models. Heavy duty, carved solid Wood stand with wide wooden base for stability. Base is mounted on four wheels for easy mobility. Unit comes with a copper or brass pot and chains & hook to hang the pot for shirodhara oil treatment.

A pot with oil capacity of 3.5 lit., is fitted with oil flow control valve mechanism. The pot has a bright natural finish.



SNEHAN KARMA PRODUCTS



MASSAGE TABLE

DESCRIPTION:

Polished teakwood constructed table is 2 metre long and 75cm wide, has a little slant towards foot end. Yantra is fitted with stainless steel sink for oil collecting, Filtration and thermostatic Heat Control arrangements of the oil. Oil is lifted and Tel Dhara drops on patients forehead automatically. Flow of oil can be controlled electrically. An electrical Timer stops the treatment at a fixed time.

MODEL 3 FEATURES:

Sleek and sturdily built. Wooden board with rim all around.

Stand: Carved wooden legs. Of sturdy build to carry the weight of Dharapathy and the patient. Finish: Available in natural wood polish.

CODE SAN-010

Yantra

Massage Table 4



ADJUSTABLE HI-LO TABLE

DESCRIPTION:

Sanjivani's Hi-Lo table is suitable for all kinds massages. It can be electrically adjusted for various treatments. It enables easy treatment & access and transfer of patients from wheelchairs. The wooden top is mounted on a powder-coated sturdy metal framework.

MODEL 3 FEATURES:

Height Adjustment. Electrically operated.

Dimension: 210 cms Length x 80 cms Width

Finish: Powder-coated metal finish.

Power Supply: 220V AC

CODE SAN-011

Adjustable Hi Lo Table 5



MASSAGE BED FOR SPA

DESCRIPTION:

Sanjivani's Massage Bed is of premium quality designed specifically for spas. It has lot of storage space underneath. There are doors on both sides so that space can be accessed from either sides. The table has a cushion leatherette which is easy to clean. The backrest can be tilted to desired heights. Reclining levers are made from stainless steel.

MODEL 3 FEATURES:

The Frame is made from solid wood.

Top cushion is 75mm and 40 density.

The legs are 4.25" thick solid wood.

CODE SAN-012

Massage Bed 6



VASHAP SWEDAN YANTRA



CODE No: SAN-013

VASHAP SWEDAN YANTRA (SITTING TYPE) with STEAM GENERATOR

A well designed sturdily built cabinet made out of water proof ply. Equipped with adjustable wooden seat and foot rest. Fitted with copper steam generator, pressure gauge indicator, steam flow valve and pilot lights. Works on electricity and requires no plumbing connection. Laminated finish outside and spray painted inside.

FEATURES:

Construction. : Hardwood and water proof ply.

Steam-Generator. : Heavy Aluminum body, with Safety valve, Steam control valves & Pressure Gauge. Water collecting tray Stainless steel stand

Power: 2kw, Heater. 220V AC.

Temperature: Unit is fitted with Temperature Controller cum Indicator.

Approximate size: width 32"x depth 41"x height 47"

Timer: 60 minutes, to control the working of steam generator.



CODE No: SAN-014

NADI SWEDAN YANTRA (Electrical)

Sanjivani's Nadi Swedan Yantra is a sturdily-built aluminium body Steam Generator. It is fitted with an electric heater inside the vessel. Has a pressure gauge, safety pressure valve & a steam flow control valve to control the flow of steam. Steam flows from a hose pipe on to a hand-held nozzle to apply steam on a particular point of the patient.

FEATURES: Capacity: 22 Litres.

Steam-Generator: Heavy Aluminum body, with Safety Valve. Steam Controller Valve & Pressure Gauge.

Herbal Basket: Perforated Stainless Steel Herbal Basket on stand is provided for placing herbs in steamer.

Timer : 60 minutes to control the steam generator.

Power: 3KW, Heater. 220V AC.

Temperature: Unit is fitted with Temperature Controller cum Indicator.

Dimension: 84" long x 36" wide x 40" high.

Finish: Inside natural and outside is polished.



CODE No: SAN-015

SARVANG VASHPA SWEDAN YANTRA (Lying Type)

Sanjivani's full-body steam bath specifically designed for weak patients to have steam bath in lying down on a special moving trolley with perforated wooden bed and his head rests on wooden pillow outside the chamber. Steam is generated and passes through pipes and flow of steam can be controlled by hand-operated valve.

FEATURES:

Hardwood and water proof ply, with window on both sides.

Steam-Generator: Heavy Aluminum body, with Safety valve. Steam controller valve & Pressure Gauge.

Timer: 60 minutes, to control the working of steam generator.

Power: 3kw, Heater. 220V AC.

Temperature: Unit is fitted with Temperature Controller cum Indicator.

Overall Size: 6.5 ft long x 32" width x 36" height.

Finish: Inside painted and outside is polished natural.



PRADHAN KARMA



CODE No: SAN-016

NASYA PEETH

Sanjivani offers a range of Nasya chairs. Used for performing Nasya and Anjana treatments, Nasyapeeth is a fully-reclining chair with an easily-adjustable head rest. The back rest and seat are made from teak wood / medicinal wood. The frame is made of powder-coated steel or stainless steel. Fittings for adjusting system are chrome-plated. A new model with raisable leg portion is also available for performing foot massage after Nasya.



CODE No: SAN-017

VAMAN PEETH

Vamana Peeth is used for implementing Vamanam procedure at ease. The chair is designed to be stable in the inclined sitting position. It's made from stainless or powder-coated steel. A calibrated jar is provided to measure the expelled liquids. A towel bar is also provided.

FEATURES: * Finest Quality * Durable * Affordable * Reliable



CODE No: SAN-018

VIRAECHAN CHAIR

Virechan chair is made of cold-rolled steel frame. It has a fibreglass seat of wood design with a teak wood back rest. A stainless steel collection vessel is also provided. It facilitates comfortable virechan procedure. A stainless steel collection bowl underneath enables easy and hygienic disposal of the excreta. The chair is available either with a stainless steel or powder-coated steel frame. It is fitted castor wheels that enables easy mobility. The back is easily adjustable.



TAAP SWEDAN YANTRA



CODE No: SAN-019

DELUXE SAUNA CABIN

This is a pre-fabricated Sauna Cabin made of quality Douglas pine wood. Made exclusively by Sanjivani for use in high temperature, the Cabin sports a cosy ambience with a very polished look.

The Sauna Cabin is fitted with a 6 kw stove with a stove guard, control panel, two layered bench, along with a bucket and ladle. It has a digital thermometer to adjust temperature inside the cabin.

Interior control panel over the cabin for temperature control and humidity adjustment.

A 3-phase 440 AC power supply is required for efficient operation. The cabin may also be assembled and installed at client's premises, if required.



PANCHKARMA UTENSILS

Sanjivani MEDICO UTENSILS



14

03 Deepak 12"



01 Shirodhara Brass Pot



02 Shirodhara Brass Pot

03 Oil Bowl



5

03 Kindi with small handle-



03 Kindi (Big)



03 Shirodhara Brass Pot



03 Shirodhara Brass Pot



3

03 Mortar & Pestic



03 Shirodhara Brass Pot



03 Nasva Yanthram



03 Shirodhara Brass Pot

CALL OR WHATSAPP US ON 9810149439. Email: sanjivanimt@yahoo.com for pricing and quote.



PANCHKARMA ACCESSORIES



CODE No: SAN-020

KATIVASTI VASTI, JANU VASTI, GREEVA VASTI, NETRA VASTI, HRIDYA VASTI RINGS

Sanjivani offers a range of Kativasti rings such as Greevavasti, Jaanuvasti, Netravasti rings in various sizes. Made of hard and durable acrylic plastic, these are made for performing several kativasti treatments in Panchkarma therapy.



CODE No: SAN-021

SHIRO-VASTI CAP

Adjustable Shirovasti cap, for oil bath of the head, outer of the cap is made of soft leather and inner of the cap is stitched with oil proof material and is fitted with three velcro straps to fix the cap tightly round the head.

Large size; 22cm wide x 80cm long.



CODE No: SAN-022

VASTI YANTRAM

Traditional metal Vasti Yantra is made with the mixture of different metals and comes with two (small and large) smooth round tipped Nethrams for painless insertion. Any size of Vasti Tips (small or large) can be screwed to the main body as per requirement.



CODE No: SAN-023



CODE No: SAN-024

Also available good quality syringes, Vasti Yantram and Agni Shalaka.